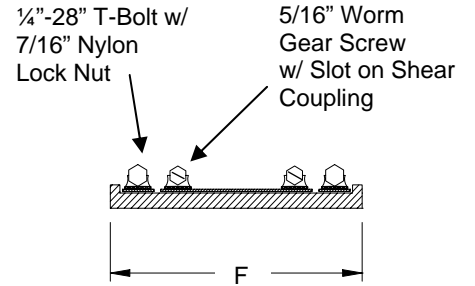
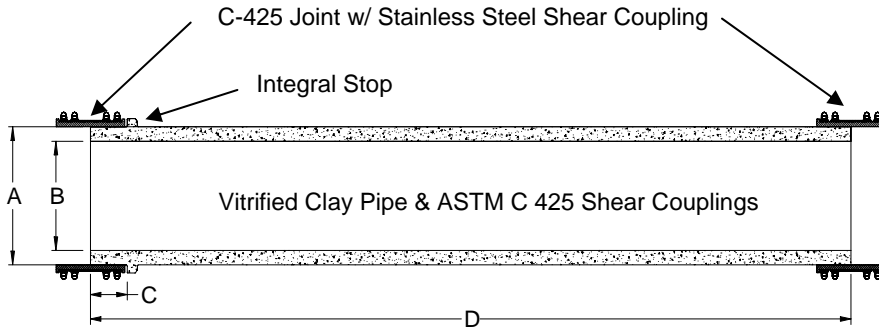


STRAIGHT LINE SEWER REPLACEMENT

VCP Factory Pipe Detail Meets ASTM C-425 & C-700

Rubber Shear Coupling Detail Meets ASTM C-425

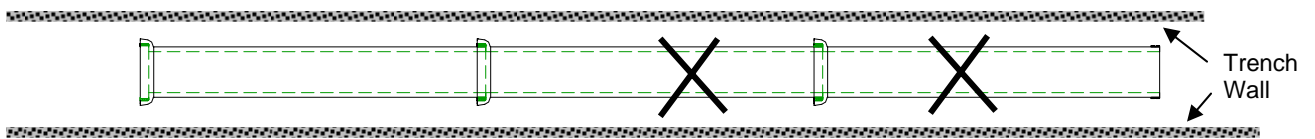


| Nominal Diameter Inches | Outside Diameter "A" + - 2 % | Inside Diameter "B" + - 2% | Shoulder Width To Stop "C" | Length of Barrel "D" + - 1/2" | EPDM Coupling Width "F" |
|-------------------------|---------------------------------|----------------------------|----------------------------|--|-------------------------|
| 6 | 7 ⁷ / ₁₆ | 6 | 3 | 24 ¹ / ₄ or 60 ¹ / ₄ | 6.5 |
| 8 | 9 ³ / ₄ | 8 | 3.5 | 24 ¹ / ₄ or 72 ¹ / ₄ | 6.5 |
| 10 | 11 ⁷ / ₈ | 10 | 3.5 | 24 ¹ / ₄ or 72 ¹ / ₄ | 6.5 |
| 12 | 14 ³ / ₁₆ | 12 | 3.5 | 24 ¹ / ₄ or 72 ¹ / ₄ | 6.5 |
| 15 | 18 ¹ / ₄ | 15 | 5.5 | 36 ¹ / ₄ or 78 ¹ / ₄ | 11 |
| 18 | 22 ¹ / ₄ | 18 | 5.5 | 36 ¹ / ₄ or 90 ¹ / ₄ | 11 |

Installation:

Select the length of line to be replaced. Cut the existing main line sewer, allowing approximately 1/2" more than the straight sections of new pipe that you will insert. Make sure that the cuts are perpendicular. Re-grade the bedding with crushed stone. Slide the flexible EPDM shear couplings past the ends of new pipe or the existing main line pipe. Insert the new pipe then slide the couplings equally over both sides of the joints. Tighten the bolts to 60 inch lbs of torque. Follow normal open trench procedures for pipe foundation, bedding and backfill.

Step 1 - Locate New Drain Connection



Step 2 - Cut An Opening Into The Existing Line, Allow Approximately 1/2" More Than The Length Of Straight Section/s.



Step 3 - Install Factory Straight Section/s - Slide Each Rubber Coupling So It Is Centered Over The Joint, Tighten Bolts To Proper Torque.

