

Denlok Jacking Pipe

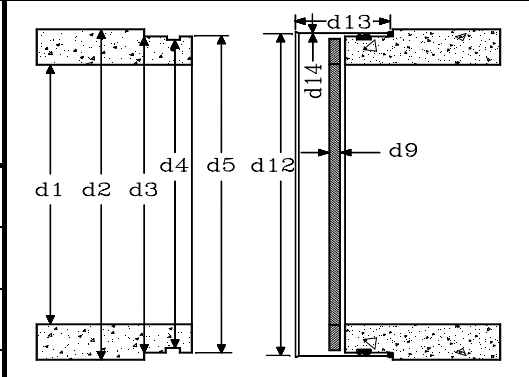
Revision Date:
14-Jan-08

Can Clay Corp., Cannelton, Indiana

Phone: 800/282-2529

Exceeds EN-295 Part 7 and ASTM C 1208

Dimensions subject to change without notice.



Jacking Strengths
Pursuant to EN 295 Part 7 = 10,875 PSI
DENLOK Exceeds EN 295 -7 & ASTM C 1208

NOMINAL DIAMETER INCHES	PIPE DIMENSIONS IN INCHES						PACKING RING			SLEEVE			Approx. Weight per Foot Pounds	Minimum Jacking Strength S. F. = 1 TONS	Working Jacking Load S.F. = 3.0 TONS	Working Jacking Load S.F. = 4.0 TONS			
	+d1	MAX d2	+d2	+d3	+d4	+d5	+d6	+d7	+d8	+d9	d10	d11					+d12	+d13	d14
	ID d1	MAX OD Max d2	OD d2	Seal ID d3 d4		d5	Shoulder Width d6 d7		d8	Thick. d9	ID d10	OD d11					ID d12	Width d13	Thick d14
	4" - 12" (DN100 - DN300) Tolerances						* Polyurethane Joint												
	0.197		0.197		0.039		0.079			0.02	+0.08/-0.0	+0.08/-0.0	0.02	0.04					
	15" - 18" (DN375 - DN450) Tolerances																		
	0.236		0.236		0.020	0.020	0.020	0.02		0.02	+0.08/-0.0	+0.08/-0.0	0.02	0.04					
	20" - 21" (DN500 - DN525) Tolerances																		
	0.236		0.236	0.020	0.020	0.020	0.020	0.020	0.02	0.02	+0.08/-0.0	+0.08/-0.0	0.02	0.04					
	24" - 27" (DN600 - DN700) Tolerances																		
	0.354		0.354	0.020	0.020	0.020	0.020	0.020	0.02	0.02	+0.08/-0.0	+0.08/-0.0	0.02	0.04					
	30" - 32" (DN750 - DN800) Tolerances																		
	0.433		0.472	0.020	0.020	0.020	0.020	0.020	0.02	0.02	+0.08/-0.0	+0.08/-0.0	0.02	0.04					
	36" - 48" (DN900 - DN1200) Tolerances																		
	0.512		0.591	0.020	0.020	0.020	0.020	0.020	0.02	0.02	+0.08/-0.0	+0.08/-0.0	0.02	0.04					
4"*	4.016	7.638	7.441		6.402			1.732		0.75	3.937	6.480	7.028	3.819	0.059	32	97	32	24
6"*	5.984	9.882	9.685		8.661			1.732		0.75	6.102	8.701	9.161	3.819	0.059	48	154	51	39
8"*	7.874	11.890	11.693		10.669			1.732		0.75	7.992	10.709	11.280	3.819	0.059	61	204	68	51
10"*	9.843	13.819	13.622		12.598			1.732		0.75	9.961	12.638	13.209	3.819	0.059	74	243	81	61
12"*	11.929	16.024	15.827		14.803			1.732		0.75	12.047	14.843	15.413	3.819	0.059	91	303	101	76
15"	15.157	19.370	19.134	18.543	18.150	18.465	0.984	0.709	0.512	0.75	15.315	18.209	18.701	4.724	0.059	115	392	131	98
16"	15.945	20.512	20.276	19.488	19.094	19.409	0.984	0.709	0.512	0.75	16.102	19.154	19.665	4.724	0.059	128	436	145	109
18"	17.953	22.716	22.480	21.811	21.417	21.732	0.984	0.709	0.512	0.75	18.110	21.476	21.988	4.724	0.059	147	543	181	136
20"	20.039	25.394	25.157	24.508	24.114	24.429	0.984	0.709	0.512	0.75	20.197	24.272	24.646	4.724	0.079	183	724	241	181
21"	20.669	25.984	25.748	24.902	24.508	24.823	0.984	0.709	0.512	0.75	20.827	24.665	25.236	4.724	0.079	190	695	232	174
24"	23.937	30.315	29.961	29.154	28.760	29.075	0.984	0.709	0.512	0.75	24.213	28.799	29.303	4.724	0.079	251	1008	336	252
27"	27.717	34.016	33.661	32.835	32.441	32.756	1.181	0.709	0.512	0.75	27.992	32.480	32.953	5.118	0.118	289	1124	375	281
30"	29.213	35.866	35.394	34.409	34.016	34.331	1.181	0.709	0.512	0.75	29.567	33.937	34.587	5.118	0.118	305	1183	394	296
30"	30.118	37.874	37.402	36.437	36.043	36.358	1.181	0.709	0.512	0.75	30.472	35.965	36.614	5.118	0.118	387	1556	519	389
32"	31.102	37.874	37.402	36.437	36.043	36.358	1.181	0.709	0.512	0.75	31.457	35.965	36.614	5.118	0.118	341	1295	432	324
36"	35.079	43.268	42.677	41.339	40.819	41.291	1.654	0.709	0.512	0.75	35.512	40.780	41.654	6.063	0.118	457	1700	567	425
36"	35.984	44.291	43.701	42.362	41.841	42.313	1.654	0.709	0.512	0.75	36.417	41.801	42.677	6.063	0.118	482	1781	594	445
39"	39.016	47.441	46.850	45.551	45.030	45.502	1.654	0.709	0.512	0.75	39.449	44.990	45.679	6.063	0.118	538	1980	660	495
42"	42.717	51.929	51.339	50.039	49.518	49.990	1.654	0.709	0.512	0.75	43.150	49.478	50.167	6.063	0.118	650	2483	828	621
48"	47.441	57.559	56.969	55.630	55.108	55.581	1.654	0.709	0.512	0.75	47.874	55.069	55.758	6.063	0.118	786	3141	1047	785